



# SERIES MPI STAINLESS STEEL



Automatic rotary monobloc bottling machine for filling and capping bottles, suitable for edible and detergent liquids.



## Technical Features

- Bottle infeed by conveyor belt
- Incoming bottle check device
- Pressure volumetric filling
- Stainless steel liquid valves, with Teflon seals
- Bottle/liquid check device
- Electric adjustment of valve open/close cams and valve plate height
- Continuous adjustment variable speed drive, with inverter and bottle flow electronic control
- Cap feed rotary selector with indirect cap pick and placing on the bottle
- Capping by screwing heads with speed adjustment and magnetic clutch, or by pressing heads.
- Electric adjustment of capping height
- Bottle outfeed by conveyor belt, with outgoing bottle check
- Programmable process control and data setting by

keyboard and display.

### Structure

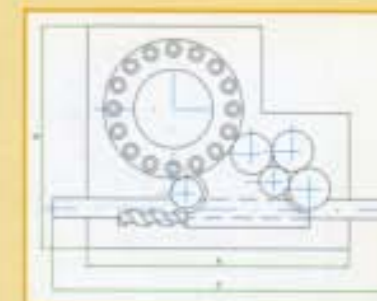
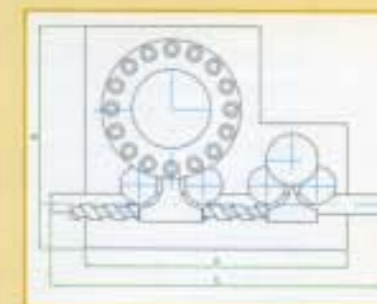
Stainless steel, polyethylene, polypropylene, PVC, Plexiglas, Hastelloyd, according to the chemical features of the product to fill.

### Optional

Bottle size changeover, cap size changeover, dosers in Pirex glass or stainless steel, central adjustment of dosers liquid level, caps automatic feeder for rotary selector, bottles accumulation table, cap presence check with automatic rejection of the bottle.

### Power

400/230/24 + compressed air.



| MODEL         | Filling Heads | Capping Heads | Filling  | Dosing range | Capacity l/hour | Overall dimensions |      |      |      |
|---------------|---------------|---------------|----------|--------------|-----------------|--------------------|------|------|------|
|               |               |               |          |              |                 | A                  | B    | C    | H    |
| MPI 12/1 2lt  | 12            | 1             | pressure | 100/2000     | 3600            | 1700               | 1600 | 3500 | 2400 |
| MPI 16/4 2lt  | 16            | 4             | pressure | 100/2000     | 5000            | 2000               | 1750 | 4000 | 2400 |
| MPI 20/5 2lt  | 20            | 5             | pressure | 100/2000     | 6500            | 2150               | 1950 | 4200 | 2400 |
| MPI 24/6 2lt  | 24            | 6             | pressure | 100/2000     | 8000            | 2300               | 2200 | 4500 | 2400 |
| MPI 30/8 2lt  | 30            | 8             | pressure | 100/2000     | 10000           | 2500               | 2350 | 5000 | 2400 |
| MPI 8/1 5 lt  | 8             | 1             | pressure | 500/5000     | 4500            | 1700               | 1600 | 3500 | 2500 |
| MPI 12/1 5 lt | 12            | 1             | pressure | 500/5000     | 7000            | 2100               | 1950 | 4200 | 2500 |
| MPI 16/3 5 lt | 16            | 3             | pressure | 500/5000     | 10000           | 2500               | 2300 | 5000 | 2500 |